

Improved Embroidery / Multi-Directional Stitching

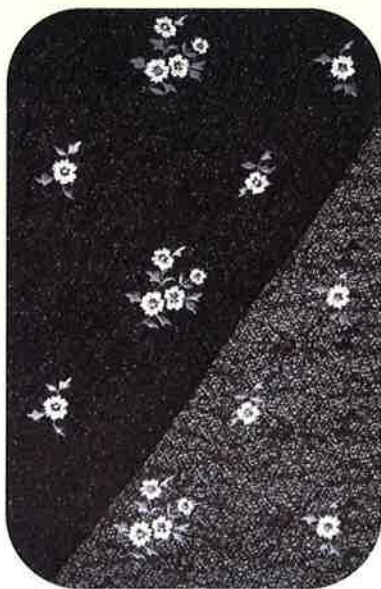
ORGAN® NEEDLES **INFORMATION**

YORI™ Series

*YORI™ needle is specially designed for "Z" twist thread.

*PAT. & TRADEMARK Pending

Unique setting of the needle's eye
avoids untwisting of embroidery thread
Minimizes problems like top thread breakage
on fine materials



Flat Embroidery / 3D Embroidery with urethane foam filling
Embroidery on lace
Embroidery on thin materials
Fine Embroidery



ORGAN NEEDLE CO., LTD.

Stable loop formation during multi-directional stitching

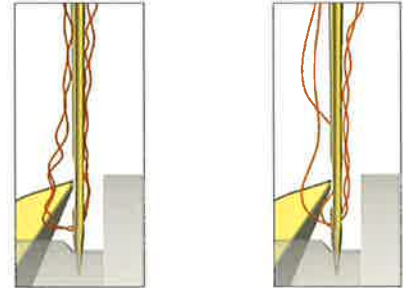
■ Avoids untwisting of thread and helps stabilize loop formation

- Minimizes Thread Splitting and Top Thread Breakage
- Improves stitching on fine materials

YORI series needles reposition the needle's eye, while keeping the scarf and groove parallel to the needle blade. This unique design avoids untwisting of the thread and helps form a stable loop. Productivity and stitch quality are improved by reducing problems like thread splitting and top thread breakage. YORI needles also demonstrate improvements on fine materials and very short stitch lengths common in embroidery.

☆ Regular type embroidery needle

[Untwisted Thread] [Improper Loop Formation]

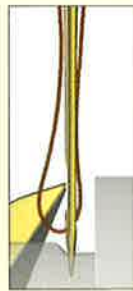


☆ DBXK5-YORI

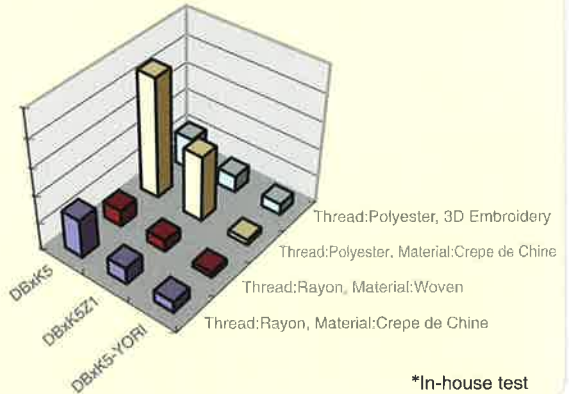


Untwisting of thread often occurs on thin materials when the thread passes through the needle's eye. The unique YORI design helps alleviate this problem.

[Proper Loop Formation]

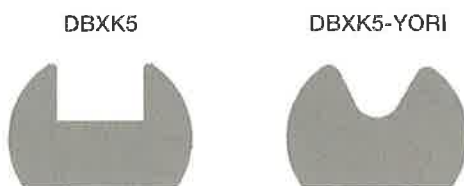


Comparison of thread breakage

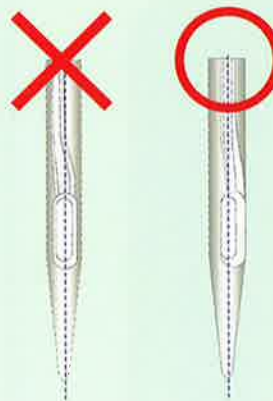


■ Minimizes needle breakage during sewing of thick materials

YORI series needles have the front groove with a unique shape and a strengthened scarf. These features avoid needle breakage during 3D embroidery with urethane foam filling and stitching of thick materials.



Please read the instructions before use.



YORI needles have a unique design that twists the groove of the needle as it reaches a re-positioned eye.

DO NOT install and position the needle's eye in the same way that you would that of ordinary needles. See the illustration for correct positioning.

■ YORI Line up

Needle System	60/8	65/9	70/10	75/11	80/12	Standard Needle System
DBXK5-YORI	●	●	●	●	●	DBXK5

*YORI™ needle is specially designed for "Z"twist thread.



ORGAN NEEDLE CO., LTD.

1 Maeyama, Ueda-shi, Nagano-ken 386-1436, Japan

TEL: +81-268-38-3363, FAX: +81-268-38-3590

<http://www.organ-needles.com/>

E-mail: sales-dpt@organ-ndl.co.jp

©ORGAN 2008.7.4000 All rights reserved